

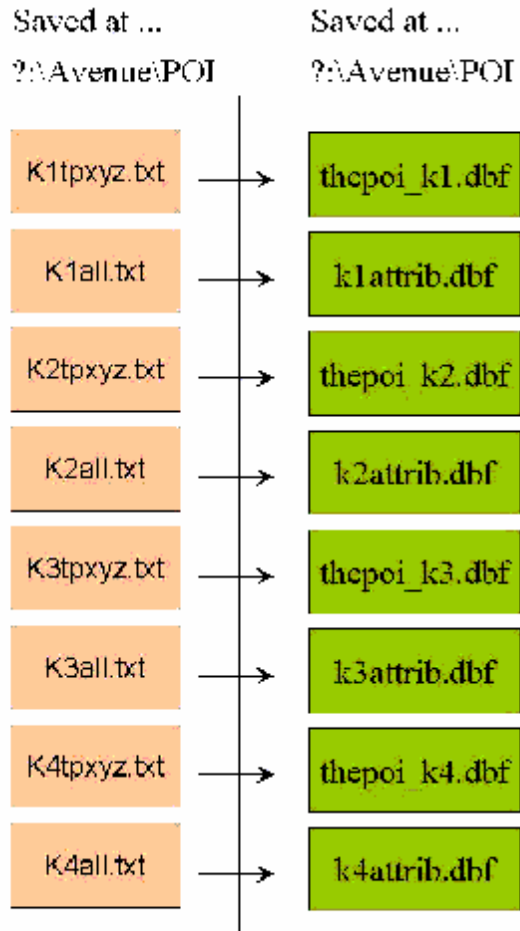
Actualització i consulta de bases de dades per a sistemes de navegació

- 1. Import module.....
- 1.1 POI Import.....
 - 1.1.1 POI Import first step (Microsoft Excel)
 - 1.1.2 POI Import second step (ArcView)
- 1.2 Network Import.....
- 2. Visualization module
- 3. Query module (POI).....
- 4. Help files



Double click here to have direct access to your Projects

1.1.1 POI Import first step (Microsoft Excel)



1.1.1 POI Import first step (Microsoft Excel)

K?tpxyz.txt files

Input tables (K?tpxyz.txt files)

NAME	WIDTH	EXAMPLE
POI id	10	52559872
Longitude	10	+000215863
Latitude	10	+004149815
SIC Code	60	4444
Poi name	60	BP

Output tables (thepoi_k*.dbf files)

NAME	CAPTURE FORMAT (EXCEL)	WIDTH	EXAMPLE
POI id	General	10	52559872
X	Text	10	+000215863
Y	Text	10	+004149815
Feature Type	General		
SIC Code	General	60	4444
Poi name	General	60	BP

1.1.1 POI Import first step (Microsoft Excel)

K?all.txt files

Input tables (K?all.* files)

NAME	WIDTH	EXAMPLE
POI Name	36	RIPOLLET
Street Name	36	SANT JORDI
Street Type	30	RAMBLA DE
Street Number	12	11
Link ID	9	60426522
Region / POI ID	16	K152559872
Chain ID	5	35
Phone Number	15	936921158
Postal Code	11	08291
SIC Code	6	4444
Administrative Level 1	36	ESPAÑA
Administrative Level 2	36	CATALUNYA
Administrative Level 3	36	BARCELONA
Administrative Level 4	36	RIPOLLET
Administrative Level 5 (it doesn't exist for Portugal)	36	RIPOLLET
Date of Inclusion / Project Inclusion	9	19980706D

1.1.1 POI Import first step (Microsoft Excel)

As you can observe field

Region / POI ID

is divided in two fields

Region
POI ID

and field

Date of Inclusion / Project Inclusion

is also divided in two fields

Date of Inclusion
Project Inclusion

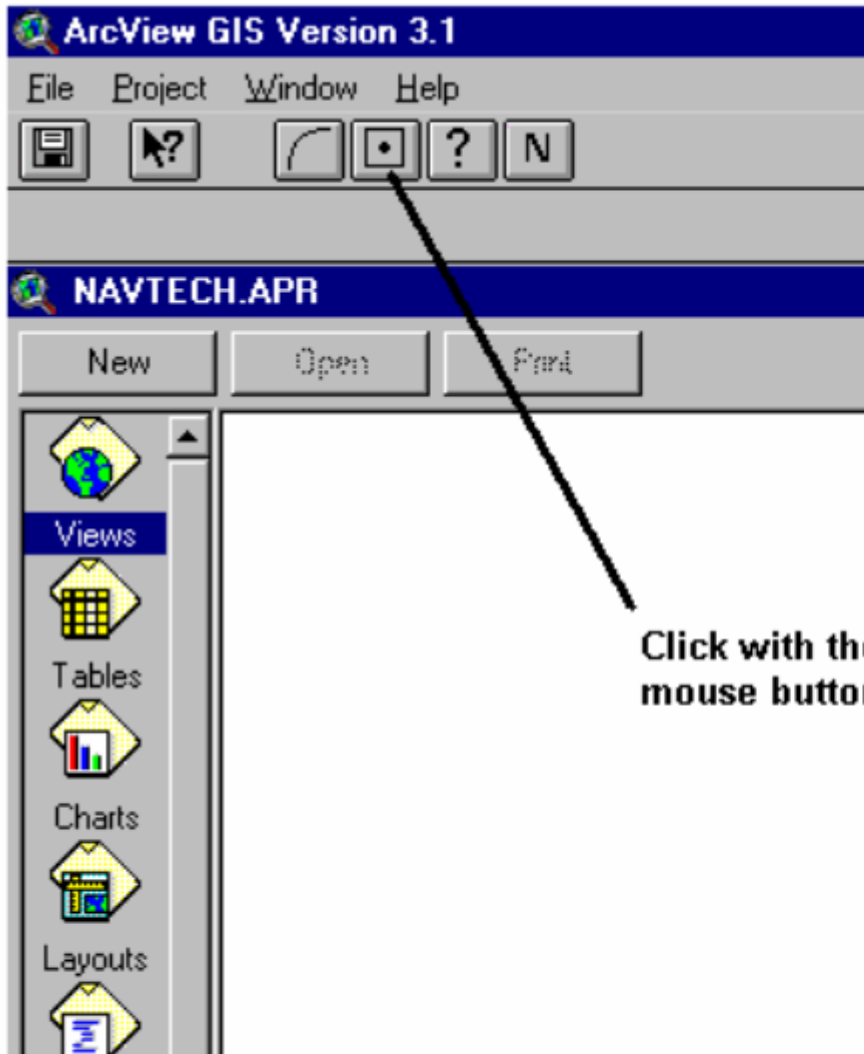
We activate the command **Formato / Columna / Autoajustar a la selección** to avoid data visualization problems with Excel and ArcView

Finally, because they already exists in **K?tpxyz.txt** files and we don't want to have same information twice, we erase following fields:

POI Name

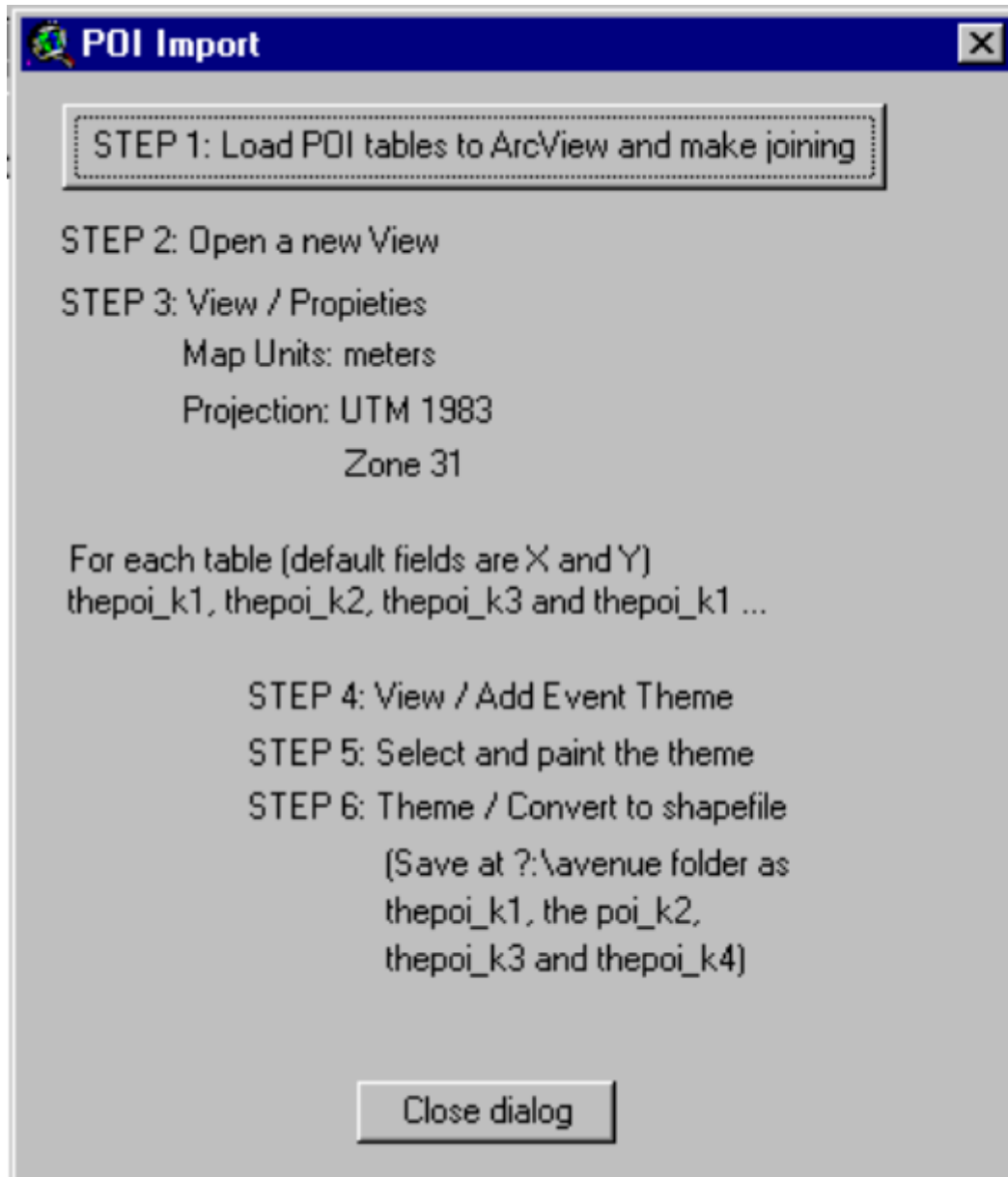
SIC Code

1.1.2 POI Import second step (ArcView)

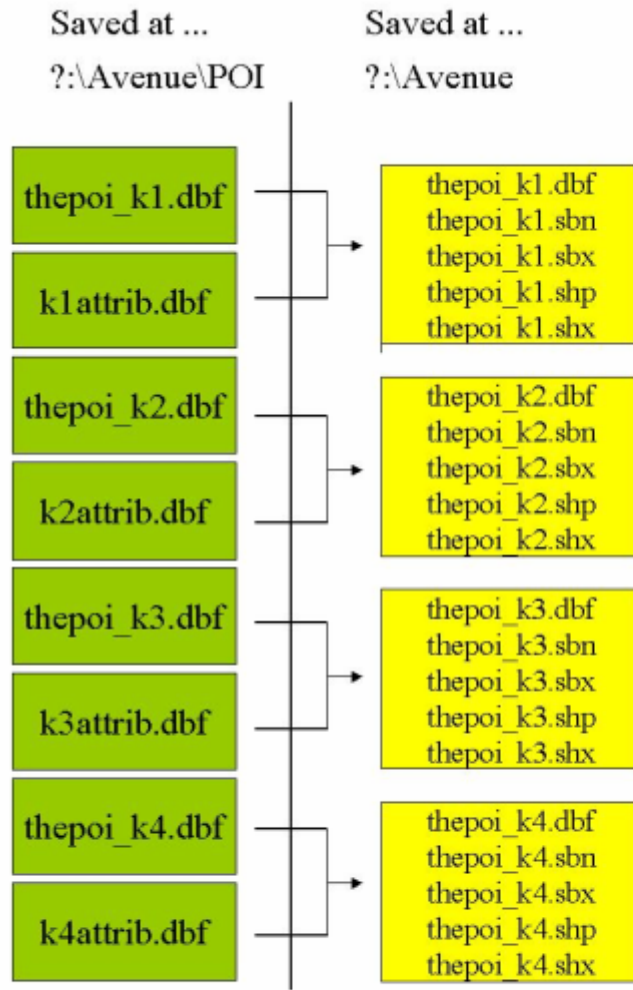


**Click with the left
mouse button**

1.1.2 POI Import second step (ArcView)

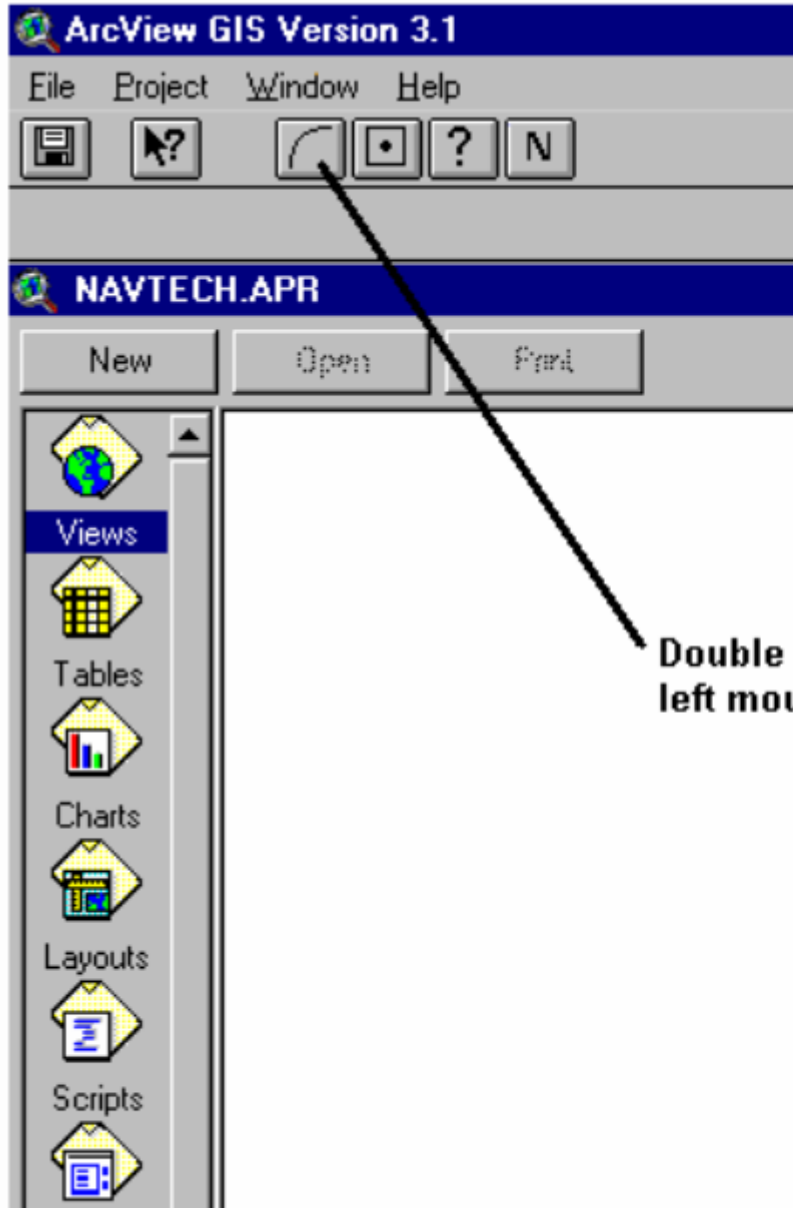


1.1.2 POI Import second step (ArcView)



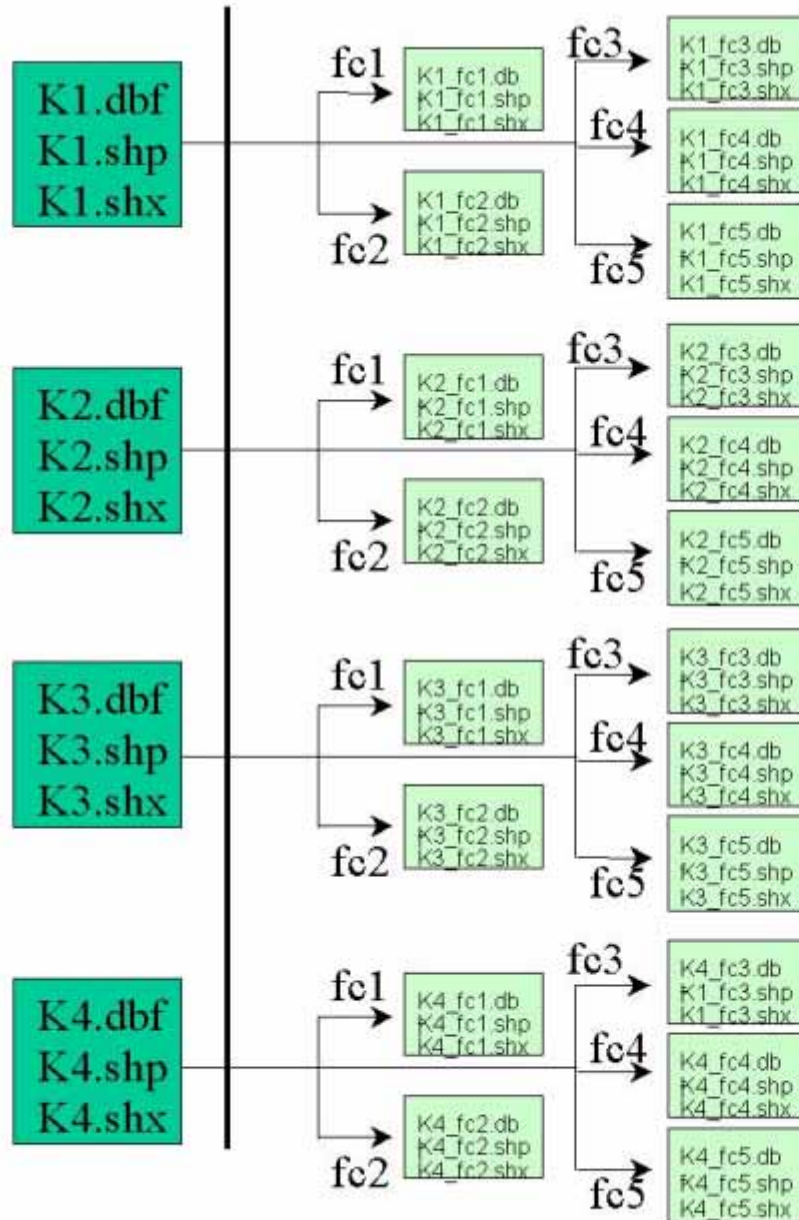
Joining (ArcView)

1.2 Network Import

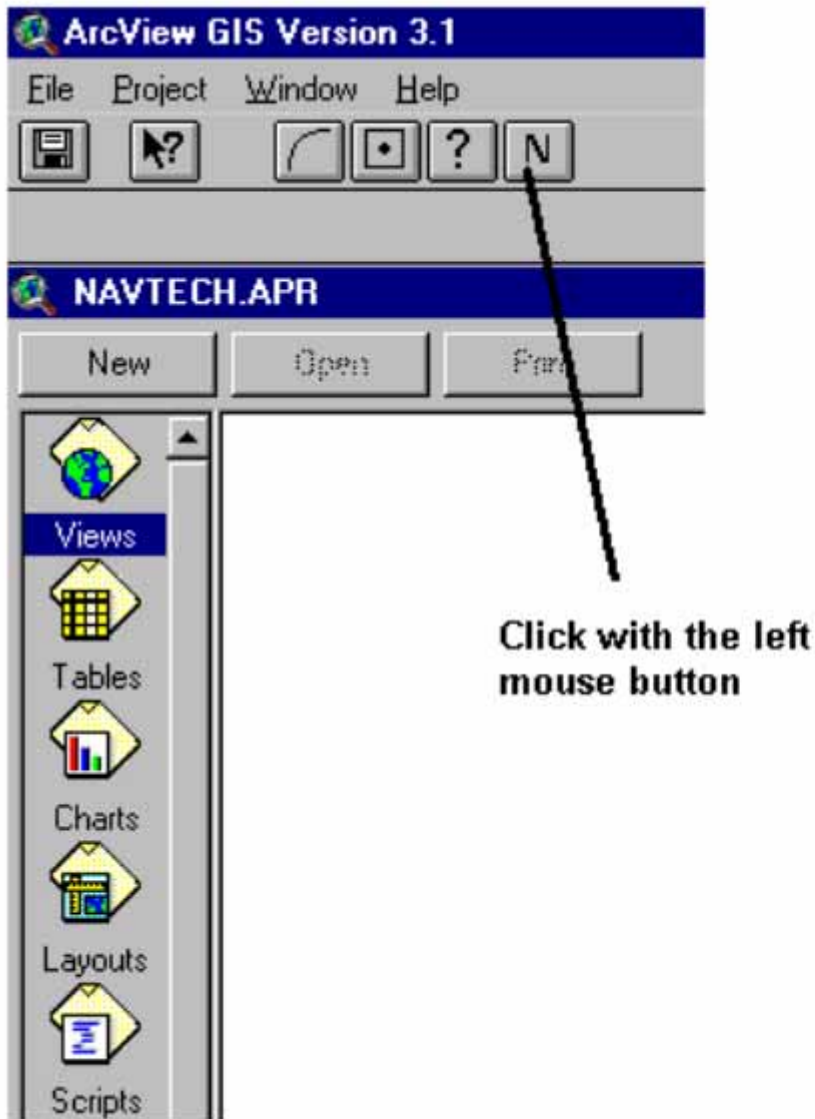


Double click with the left mouse button

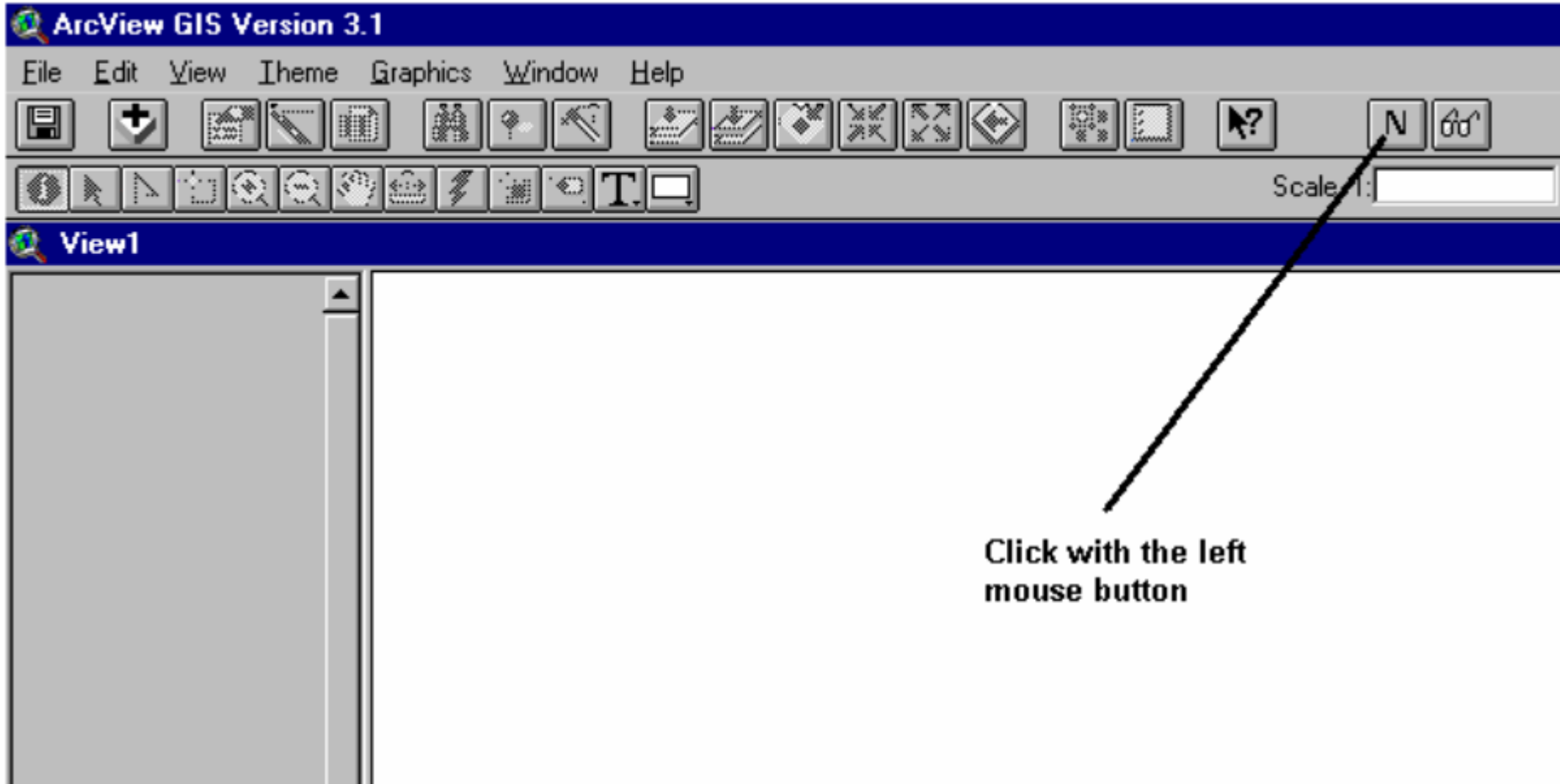
1.2 Network Import



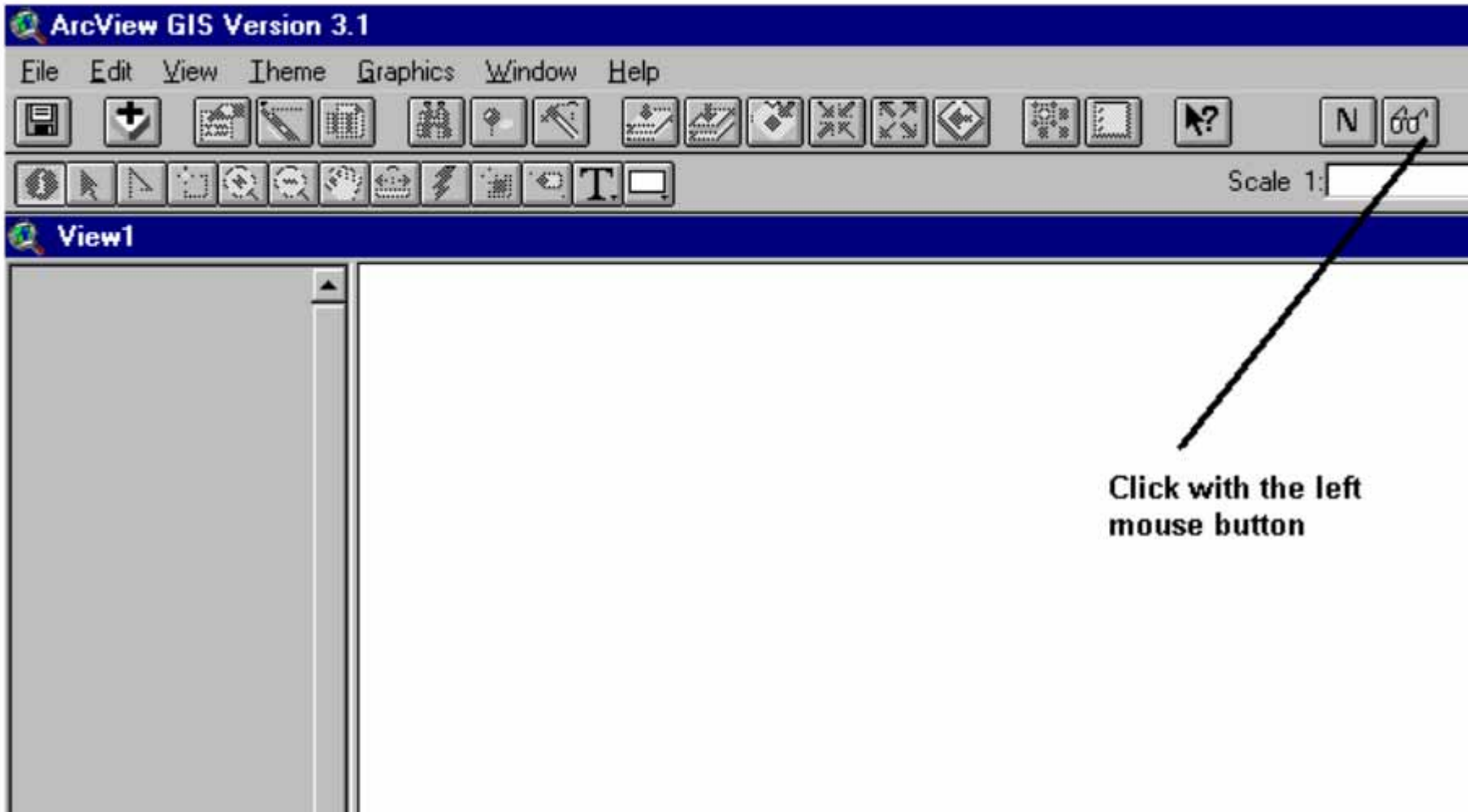
2. Visualization module



2. Visualization module



3. Query module



Click with the left mouse button

3. Query module

POI QUERY HELP

1. Double click FACILITY TYPE you wish to query for
2. Press CTRL-C

3. Close Dialog

4. Open Query Builder and select field FACILITY TYPE
5. Place cursor after = in the Query Builder, and press CTRL-V

01.-	"AIRPORT"	15.-	"HIGHER_EDUCATION"	29.-	"RENTAL_CAR_AGENCY"
02.-	"AMUSEMENT_PARK"	16.-	"HISTORICAL_MONUMENT"	30.-	"REST_AREA"
03.-	"AUTO_SERVICE-MAINTENANCE"	17.-	"HOSPITAL"	31.-	"RESTAURANT"
04.-	"BOWLING_CENTRE"	18.-	"HOTEL"	32.-	"SHOPPING"
05.-	"BUS_STATION"	19.-	"ICE-SKATING_RING"	33.-	"SKI_RESORT"
06.-	"BUSINESS_FACILITY"	20.-	"NAMED_PLACE"	34.-	"SPORTS_CENTRE"
07.-	"CASINO"	21.-	"MUSEUM"	35.-	"SPORTS_COMPLEX"
08.-	"CINEMA"	22.-	"PARK-RECREATION_AREA"	36.-	"TOURIST_ATTRACTION"
09.-	"CITY_HALL"	23.-	"PARKING_GARAGE"	37.-	"TOURIST_INFORMATION"
10.-	"CIVIC-COMMUNITY_CENTRE"	24.-	"PARKING_LOT"	38.-	"TRAIN_STATION"
11.-	"CONVENTION-EXHIBITION_CENTRE"	25.-	"PARK-RIDE"	39.-	"WINERY"
12.-	"NIGHT_LIFE"	26.-	"PERFORMING_ARTS"	40.-	"AUTO_DEALERSHIPS"
13.-	"FERRY_TERMINAL"	27.-	"PETROL-GASOLINE_STATION"	41.-	"BORDER_CROSSING"
14.-	"GOLF_COURSE"	28.-	"PUBLIC_SPORTS_AIRPORT"		

4. Help files

